



PRODUCT & SERVICE CATALOGUE

ALUBASE 2022



ALUBASE INDUSTRY
www.alubaseind.com



Starting from 2012, Alubase today is one of the major general supplier and service provider in the aluminium industry, supply and service covering every section of the aluminium processing units, other than aluminium industry, our service also extended to other industry like steel, cement, mining , environmental management etc.

Alubase has been always dedicated to providing our customers with quality products, tailored services and leading –edge technologies to help reduce production costs per ton, minimize melt loss, maximize productivity, and optimize supply chain management. We work alongside with our customers to explore the best possible smelting solutions to refine product quality and mitigate environmental impacts worldwide.

we are growing with our customers.

Our Mission

- **QUALITY** Stable Quality
- **DELIVERY** On Time Delivery
- **SERVICE** Excellency Service
- **SAFE** Safe & Green
- **COST** Cost Saving Max

Our Reference In Aluminium Industry

- **ALBA,** Bahrain
- **ALCOA,** Australia, Brazil, Canada, Iceland, Norway
- **ALUAR,** Argentina
- **AOG,** Greece
- **CBA,** Brazil
- **EGA,** UAE
- **HINDALCO,** India
- **MAADEN,** KSA
- **QATALUM,** Qatar
- **RTA,** Australia, Canada
- **SOHAR,** Oman
- **SOUTH 32,** South Africa
- **TRIMET,** France
- **HYDRO,** Norway
- **ALUCAM** CAMEROON

Supply List for Pot Room & Reduction

- Cathode Blocks [bottom & side]
- Collector bar
- Silicon Carbide
- BRO/BIR bricks
- Vermiculite Boards
- Calcium Silicate Insulating Boards
- Rock Wools
- Pot Shells
- Pot Hood
- Anode Clamp
- Auxiliary Wedge
- CAFD & Parts
- Filter Bag & cage for GTC
- Graphite
- Soda Ash
- Thermal Couples
- Pig iron
- Bus bar

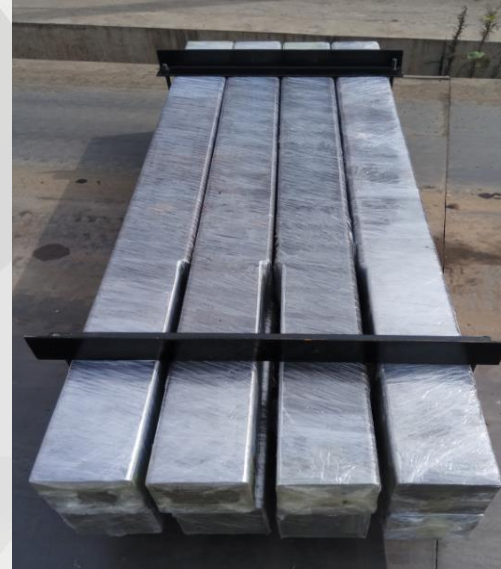
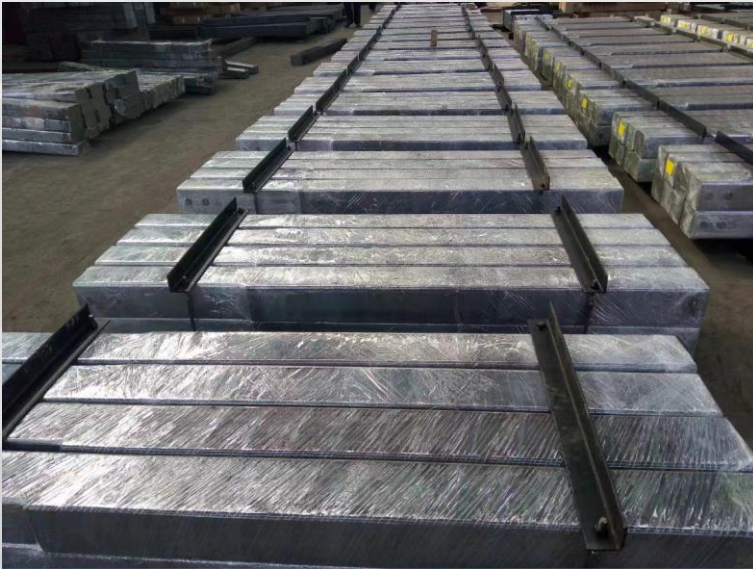
Cathode Block



We supply all grades of cathode blocks, including semi graphitic, full graphitic, graphitized.

Our reference : Alba, Hindalco, Sohar,

Collector Bar



We supply grades of SAE1006, YT02, CICB collector bar for our customers. Please contact us freely for any inquiry or other grade required.

Our reference : Alba, *Alcoa, *Aluar, AOG, CBA
* represents CICB supplied

Supply List for Carbon & Rodding

- Calcined Petroleum Coke
- Flue Wall Bricks
- Top / Central / End Blocks
- Peep Hole Cover
- Anode Yoke/Bar /Pin/Stem/Clad
- Aluminium Rod
- Cast brackets
- Anode Pallet/Dross pan
- Filter bag & cage for FTC
- Thermal Couples
- Pig iron
- Graphite stub coating

Anode Bars / Pins



We supply customized grade and size of anode bars /pins for our customers. Our reference : Alcoa, Aluar, CBA, Maaden, Sohar, South32, Hydro,Cameroon

Supply List for Cast House

- Metal Silicon
- Metal Magnesium
- Metal Zinc
- Master alloys
- Fire bricks
- Refractory castables
- Refractory for treatment process
- Refractory for coreless induction furnace lining material for molten aluminium alloy
- Nano Insulation materials
- Launder precast and commissioning
- Furnace relining material&commissioning
- Ceramic fiber blankets/papers/sheets
- Alumina balls
- Siphon pipe / tapping tubes
- Ingot mold / sow mold / dross pan
- Ladle /crucible shell or with relining complete

Fabricated Items



We fabricating dross pan/ sow mold/ ingot mold, siphon pipe, tapping tube as per customers requirement.

Our reference : ALMEXA, BSL, OARC, SA,

ALUBASE Vehicles & Equipment

- Forklifts
- Furnace Charger
- Furnace Tender / Skimmer
- Bobcats
- Front end Loader
- Mobile Elevating Work
- Rough Terrain Crane
- Cranes
- Coil Up Ender Machine
- Coil Grabs
- C-hook
- Conveyor & Belt

Furnace Charger



The first Alubase Furnace charger vehicle was design and built during conversation with customer, after that Alubase has optimizing the vehicle 3 times, now the loading bucket can be auto load or unload within 30 seconds. It's a durable and easy operation and very low cost vehicle for our customers. Please contact us freely for details.



forklifts



Furnace Tender



Furnace Charger



Bobcats



To Be Your Real Partner for a Green World Together



Please find us :

Add	: Office 301-303, No.1870 Dongfang Road, Shanghai, China
Tel	: +86 21 5031 2680 / 5031 2690
Email	: info@alubaseind.com
http	: www.alubaseind.com